

# 2021 AEC M&A Mid-Year Review

U.S. design firm deals up 34% in the first half of 2021 compared to the first half of 2020 as industry M&A reaches unprecedented levels of activity.

## Types of Deals

January 1 – June 30

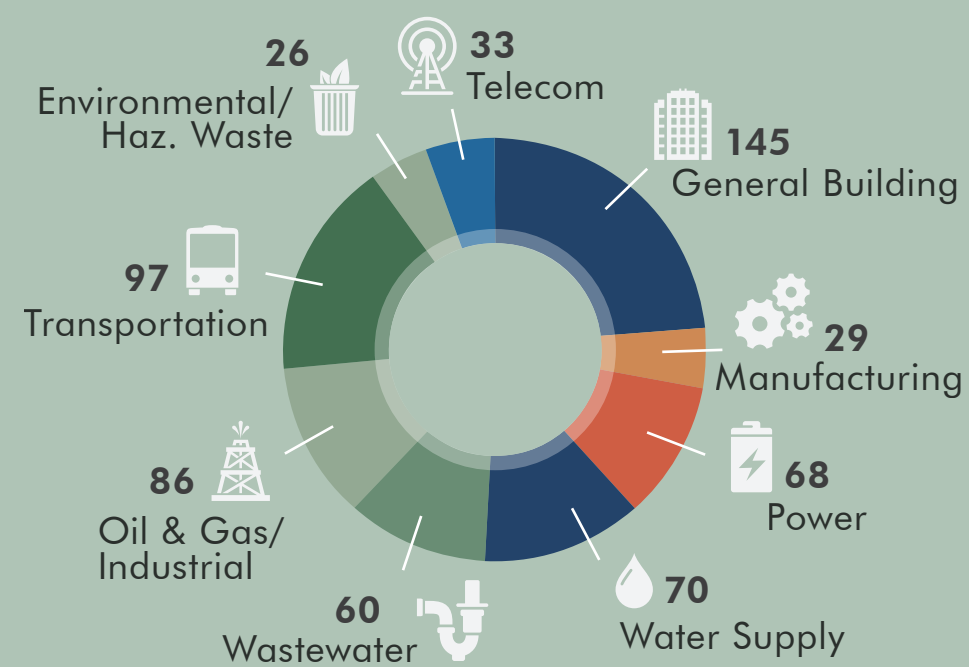
### BUYERS

MEDIAN SIZE  
**\$96.3 MILLION REVENUE**  
400 EMPLOYEES

### SELLERS

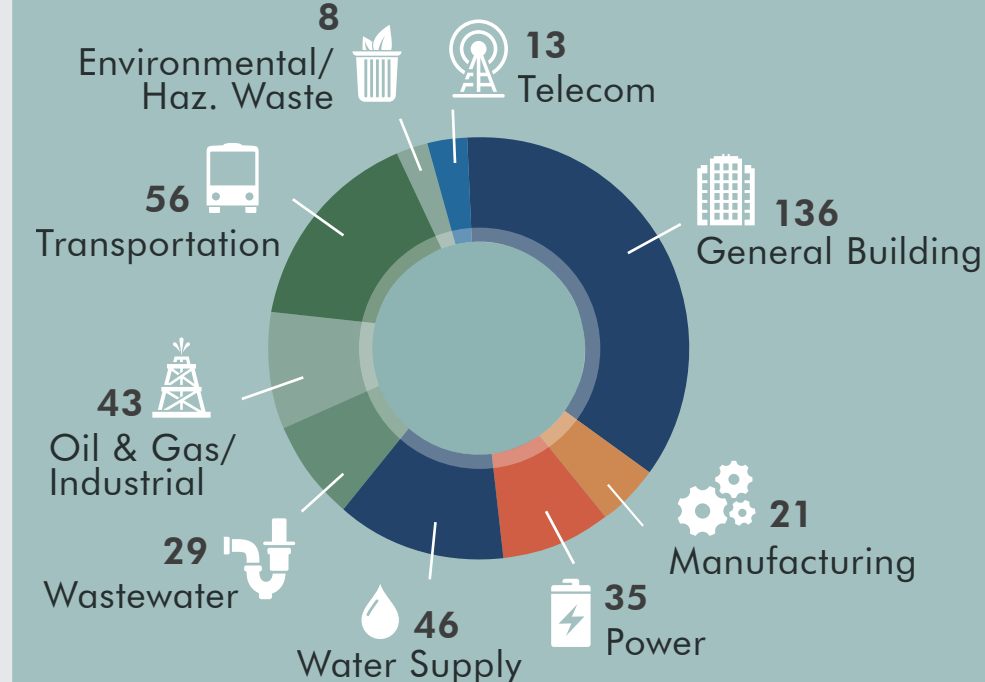
MEDIAN SIZE  
**\$3.1 MILLION REVENUE**  
22 EMPLOYEES

#### BY SECTOR



Deals may be included in more than one market or service.

#### BY SECTOR



Deals may be included in more than one market or service.

#### PROVIDING SERVICES IN

Architecture / Interior Design: 67



Engineering: 144



CM/PM: 53



Surveying/Mapping: 49



Environmental Services: 79



#### PROVIDING SERVICES IN

Architecture / Interior Design: 55



Engineering: 124



CM/PM: 50



Surveying/Mapping: 35



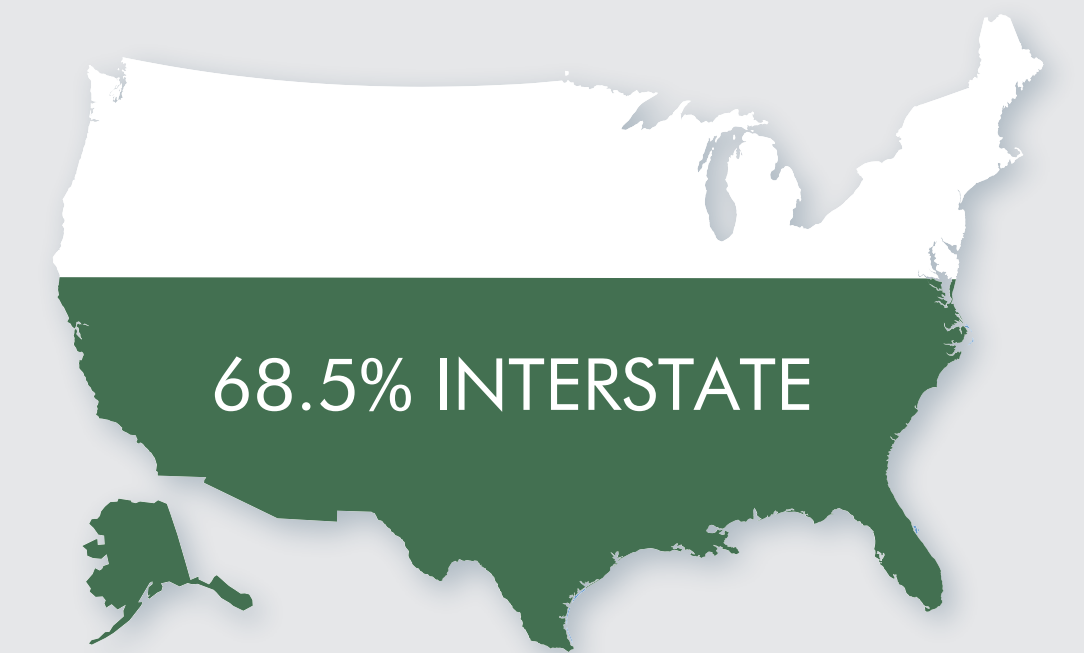
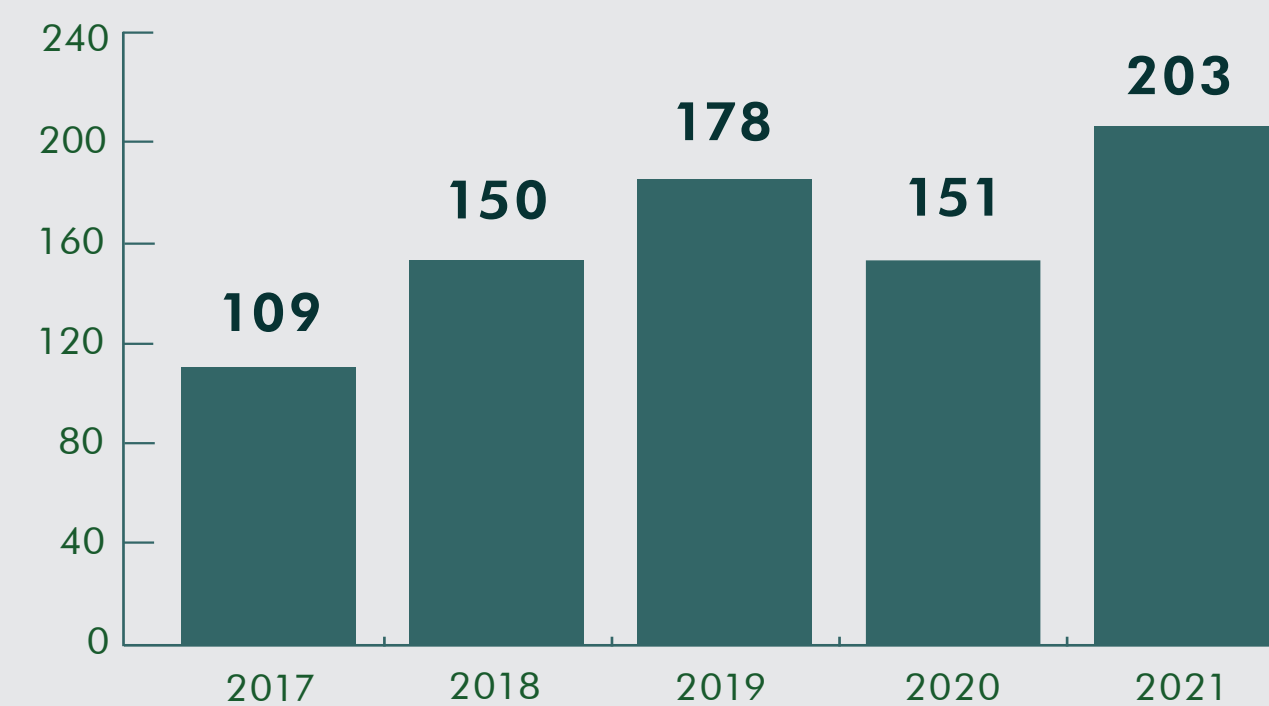
Environmental Services: 64



## U.S. Deals

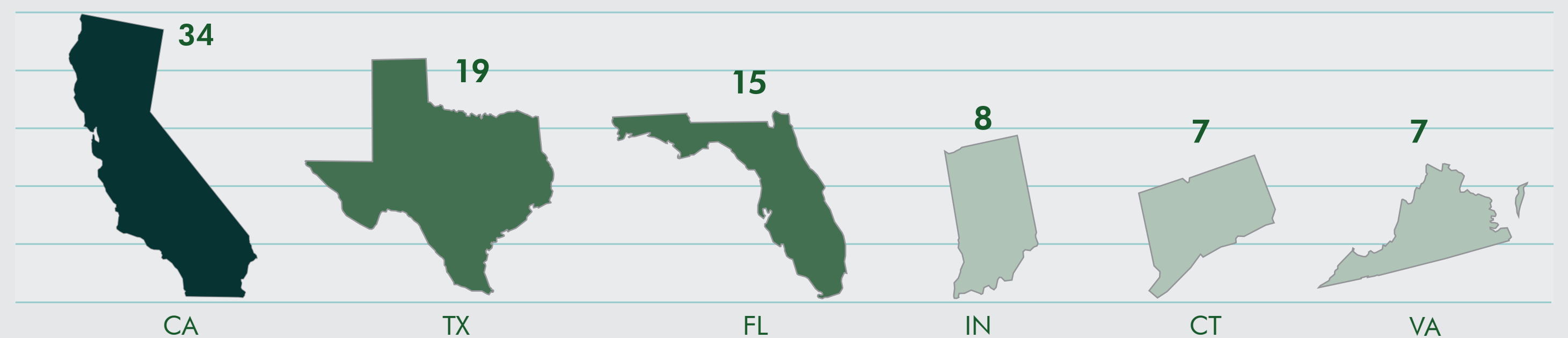
January 1 – June 30

### U.S. DEALS PACE FOR HIGHEST LEVELS ON RECORD



U.S. DEALS:  
**139 INTERSTATE**

### TOP STATES FOR DEALS

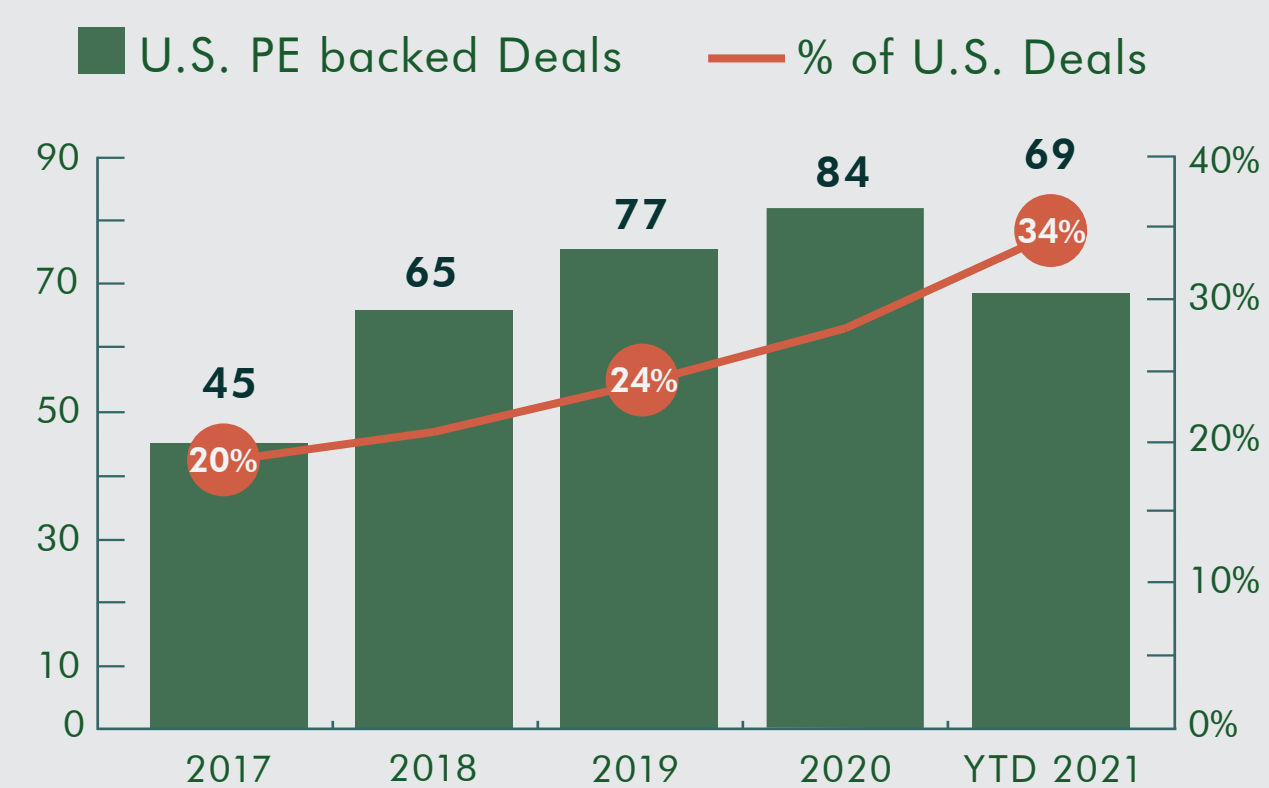


### HEADLINE TRANSACTIONS IN THE ENR TOP 500

**11**  
**ENR**  
**TOP 500**  
RANKED FIRMS  
ACQUIRED  
OR RECAPITALIZED



## Focus on Private Equity



**34% OF U.S. DEALS INVOLVED PRIVATE EQUITY**

